

## **Tilts pār Ventu, Ventspilī**

Date: 01.12.2016  
Operator: Edgars Svētiņš

SIA Gaismas Stils  
www.gaismasstils.lv  
Maskavas iela 12, Rīga  
LV-1050, Latvija

Operator Edgars Svētiņš  
Telephone +371 67276760  
Fax +371 67225072  
e-Mail edgars@gaismasstils.lv

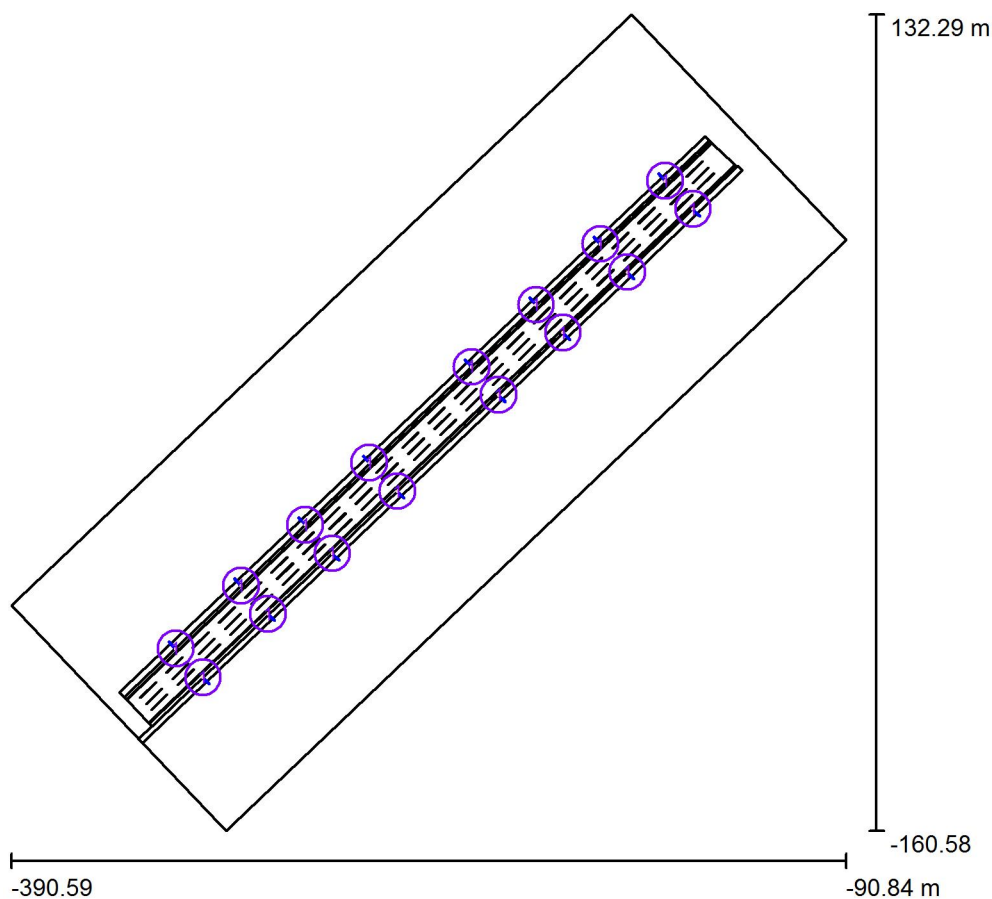
## Table of contents

<b>Tilts pār Ventu, Ventspilī</b>	
Project Cover	1
Table of contents	2
<b>Tilts</b>	
Planning data	3
Luminaire parts list	4
3D Rendering	5
False Color Rendering	6
<b>Ghisamestieri Rondo</b>	
Planning data	7
Photometric Results	8
<b>Valuation Fields</b>	
<b>Valuation Field Roadway 1</b>	
<b>Observer</b>	
<b>Observer 1</b>	
Isolines (L)	10
<b>Observer 2</b>	
Isolines (L)	11
<b>Observer 3</b>	
Isolines (L)	12
<b>Observer 4</b>	
Isolines (L)	13

SIA Gaismas Stils  
www.gaismasstils.lv  
Maskavas iela 12, Rīga  
LV-1050, Latvija

Operator Edgars Svētiņš  
Telephone +371 67276760  
Fax +371 67225072  
e-Mail edgars@gaismasstils.lv

## Tilts / Planning data



Light loss factor: 0.80, ULR (Upward Light Ratio): 0.0%

Scale 1:2715

### Luminaire Parts List

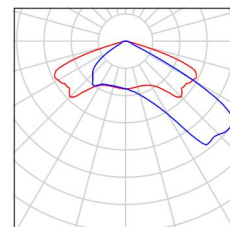
No.	Pieces	Designation (Correction Factor)	$\Phi$ (Luminaire) [lm]	$\Phi$ (Lamps) [lm]	P [W]
1	16	GHISAMESTIERI Rondo LED 4 module 3000K 350ma 76W (1.000)	8996	9008	76.0
Total:			143931	Total: 144128	1216.0

SIA Gaismas Stils  
www.gaismasstils.lv  
Maskavas iela 12, Rīga  
LV-1050, Latvija

Operator Edgars Svētiņš  
Telephone +371 67276760  
Fax +371 67225072  
e-Mail edgars@gaismasstils.lv

## Tilts / Luminaire parts list

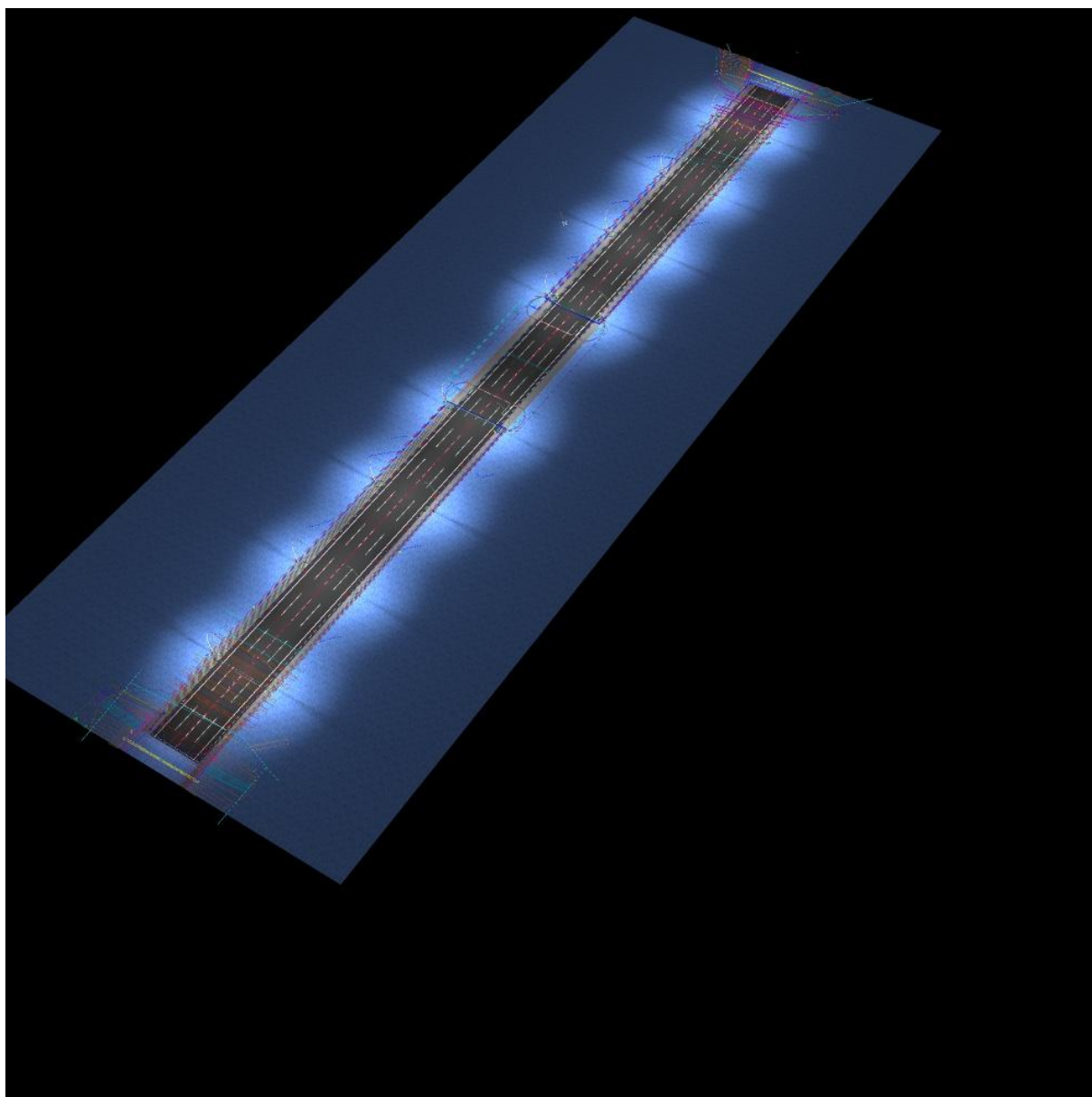
16 Pieces GHISAMESTIERI Rondo LED 4 module 3000K  
350ma 76W  
Article No.: Rondo LED  
Luminous flux (Luminaire): 8996 lm  
Luminous flux (Lamps): 9008 lm  
Luminaire Wattage: 76.0 W  
Luminaire classification according to CIE: 100  
CIE flux code: 35 81 98 100 100  
Fitting: 1 x 1MD\_3K\_0.350A\_ (Correction Factor 1.000).



SIA Gaismas Stils  
www.gaismasstils.lv  
Maskavas iela 12, Rīga  
LV-1050, Latvija

Operator Edgars Svētiņš  
Telephone +371 67276760  
Fax +371 67225072  
e-Mail edgars@gaismasstils.lv

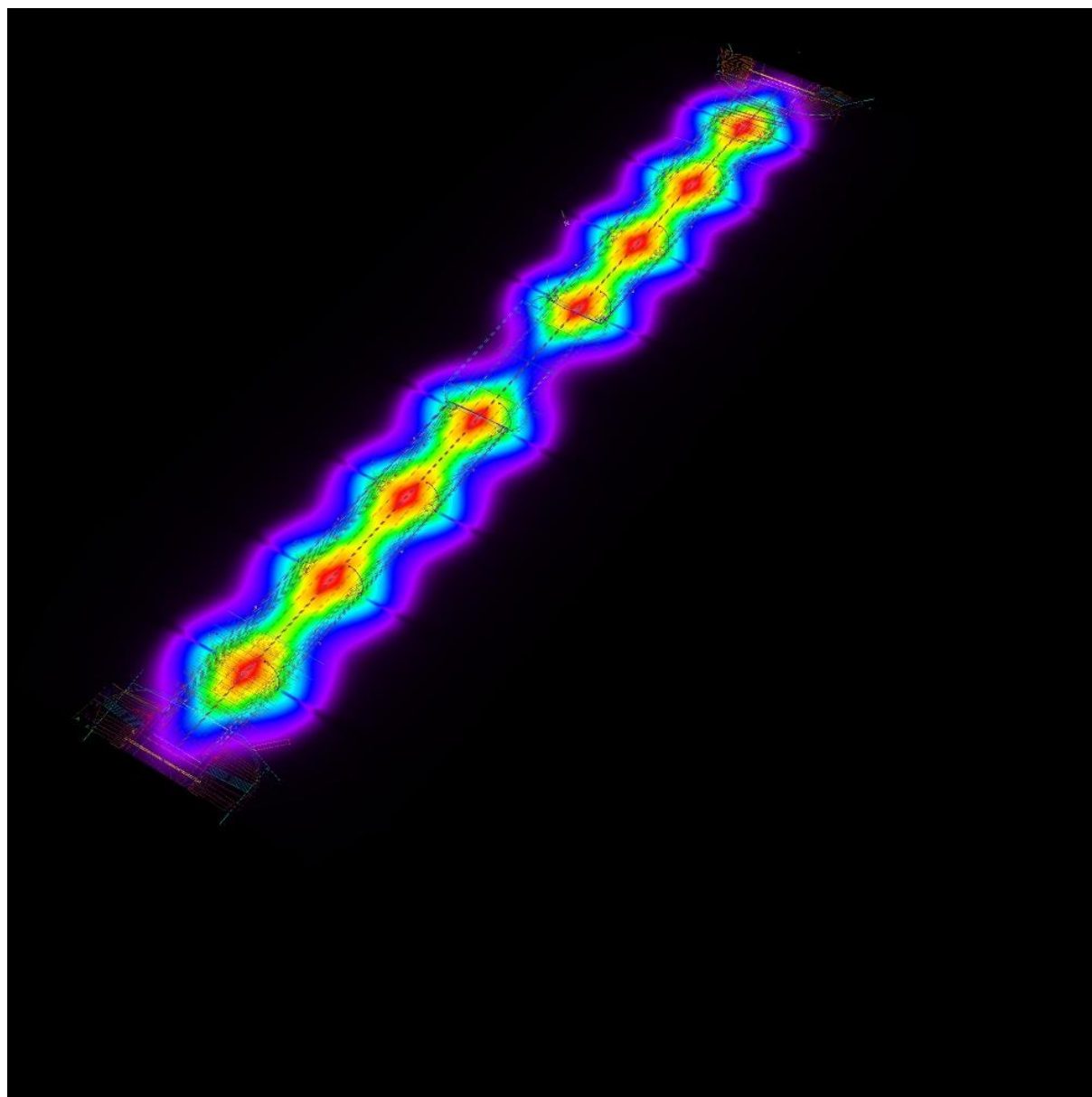
## Tilts / 3D Rendering



SIA Gaismas Stils  
www.gaismasstils.lv  
Maskavas iela 12, Rīga  
LV-1050, Latvija

Operator Edgars Svētiņš  
Telephone +371 67276760  
Fax +371 67225072  
e-Mail edgars@gaismasstils.lv

## Tilts / False Color Rendering



0 2 5 10 15 20 25 30 50 lx

SIA Gaismas Stils  
www.gaismasstils.lv  
Maskavas iela 12, Rīga  
LV-1050, Latvija

Operator Edgars Svētiņš  
Telephone +371 67276760  
Fax +371 67225072  
e-Mail edgars@gaismasstils.lv

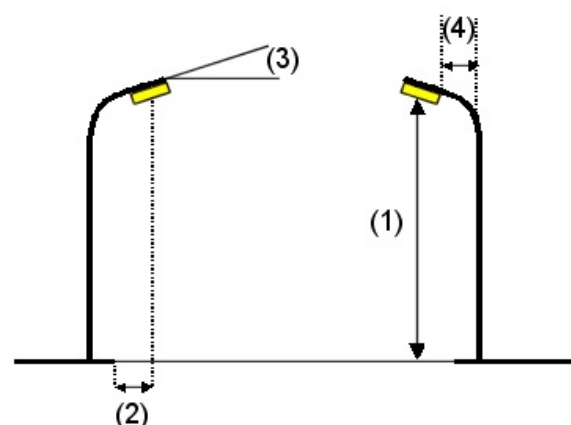
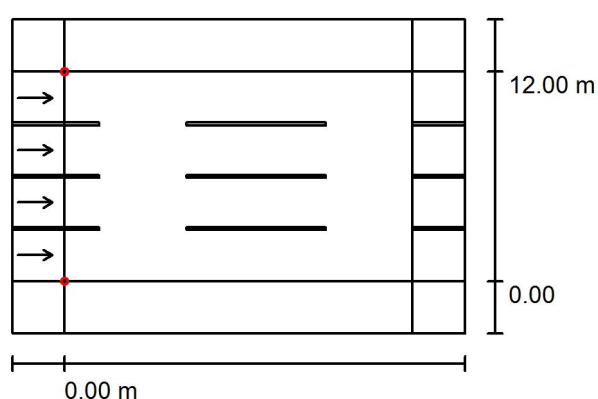
## Ghisamestieri Rondo / Planning data

### Street Profile

Sidewalk 1	(Width: 3.000 m)
Roadway 1	(Width: 12.000 m, Number of lanes: 4, tarmac: R3, q0: 0.070)
Sidewalk 2	(Width: 3.000 m)

Light loss factor: 0.80

### Luminaire Arrangements



Luminaire:	GHISAMESTIERI Rondo LED 4 module 3000K 350ma 76W
Luminous flux (Luminaire):	8996 lm
Luminous flux (Lamps):	9008 lm
Luminaire Wattage:	76.0 W
Arrangement:	Double row, opposing
Pole Distance:	32.000 m
Mounting Height (1):	10.200 m
Height:	10.000 m
Overhang (2):	0.000 m
Boom Angle (3):	0.0 °
Boom Length (4):	2.950 m

Maximum luminous intensities  
at 70°: 388 cd/klm  
at 80°: 17 cd/klm  
at 90°: 0.00 cd/klm

Any direction forming the specified angle from the downward vertical, with the luminaire installed for use.

No luminous intensities above 90°.

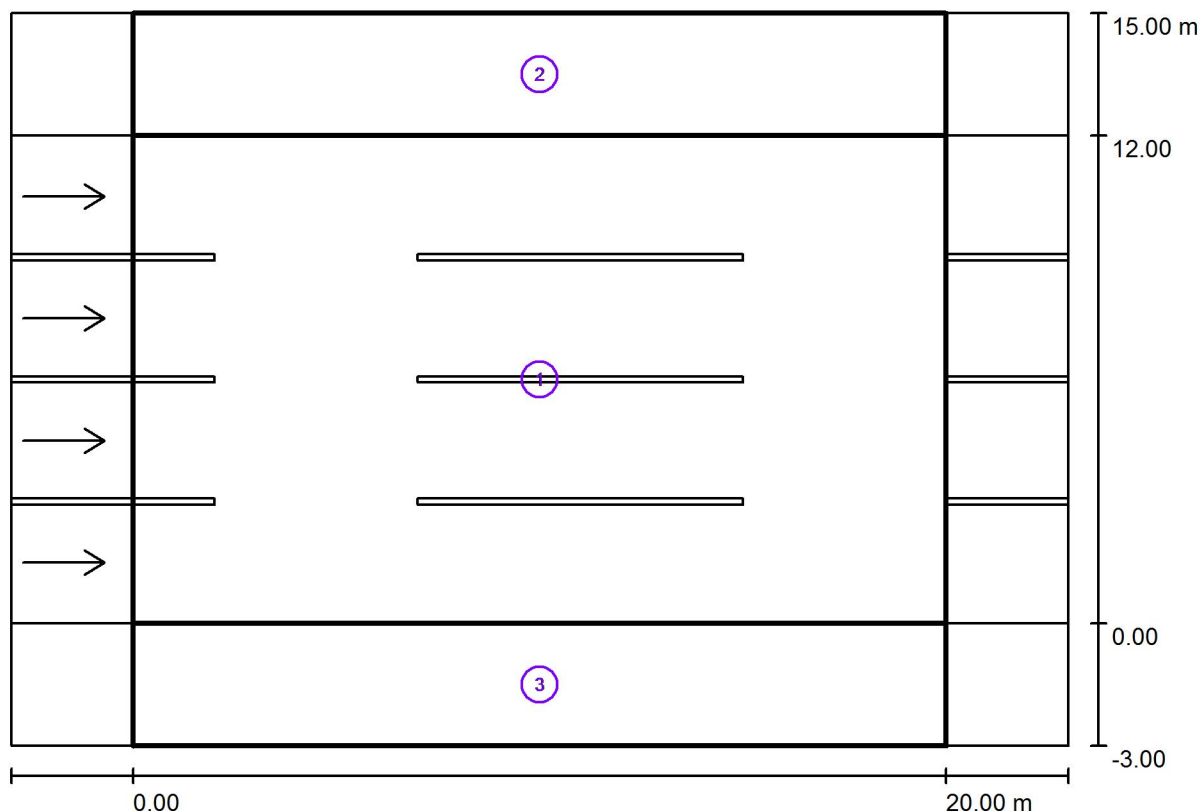
Arrangement complies with luminous intensity class G4.

Arrangement complies with glare index class D.6.

SIA Gaismas Stils  
www.gaismasstils.lv  
Maskavas iela 12, Rīga  
LV-1050, Latvija

Operator Edgars Svētiņš  
Telephone +371 67276760  
Fax +371 67225072  
e-Mail edgars@gaismasstils.lv

## Ghisamestieri Rondo / Photometric Results



Light loss factor: 0.80

Scale 1:186

### Calculation Field List

- Valuation Field Roadway 1  
Length: 20.000 m, Width: 12.000 m  
Grid: 11 x 12 Points  
Accompanying Street Elements: Roadway 1.  
tarmac: R3, q0: 0.070  
Selected Lighting Class: ME3b

(All lighting performance requirements are met.)

	$L_{av}$ [cd/m <sup>2</sup> ]	U0	UI	TI [%]	SR
Calculated values:	1.22	0.63	0.81	7	0.54
Required values according to class:	$\geq 1.00$	$\geq 0.40$	$\geq 0.60$	$\leq 15$	$\geq 0.50$
Fulfilled/Not fulfilled:	✓	✓	✓	✓	✓



SIA Gaismas Stils  
www.gaismasstils.lv  
Maskavas iela 12, Rīga  
LV-1050, Latvija

Operator Edgars Svētiņš  
Telephone +371 67276760  
Fax +371 67225072  
e-Mail edgars@gaismasstils.lv

## Ghisamestieri Rondo / Photometric Results

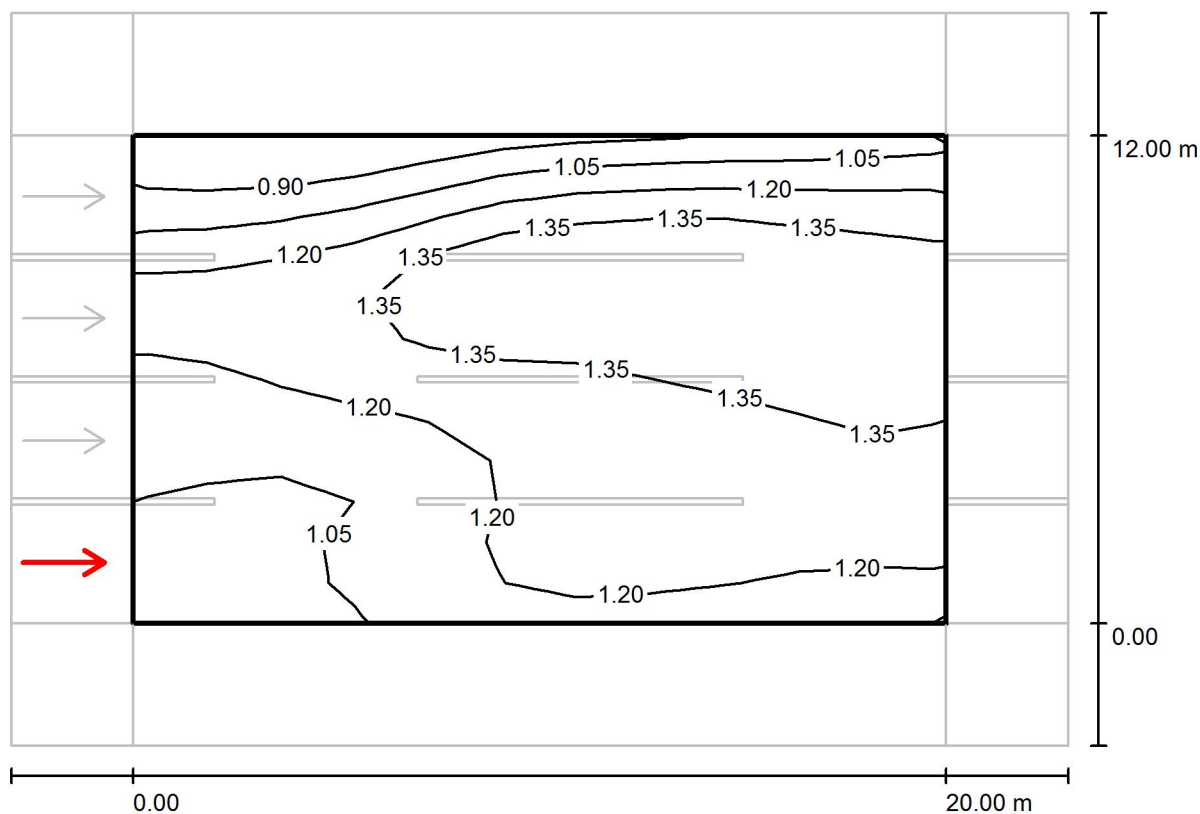
### Calculation Field List

2	Valuation Field Sidewalk 1 Length: 20.000 m, Width: 3.000 m Grid: 11 x 3 Points Accompanying Street Elements: Sidewalk 1. Selected Lighting Class: S2	(All lighting performance requirements are met.)		
			$E_{av}$ [lx]	$E_{min}$ [lx]
	Calculated values:		12.05	6.24
	Required values according to class:		$\geq 10.00$	$\geq 3.00$
	Fulfilled/Not fulfilled:		✓	✓
3	Valuation Field Sidewalk 2 Length: 20.000 m, Width: 3.000 m Grid: 11 x 3 Points Accompanying Street Elements: Sidewalk 2. Selected Lighting Class: S2	(All lighting performance requirements are met.)		
			$E_{av}$ [lx]	$E_{min}$ [lx]
	Calculated values:		12.05	6.24
	Required values according to class:		$\geq 10.00$	$\geq 3.00$
	Fulfilled/Not fulfilled:		✓	✓

SIA Gaismas Stils  
www.gaismasstils.lv  
Maskavas iela 12, Rīga  
LV-1050, Latvija

Operator Edgars Svētiņš  
Telephone +371 67276760  
Fax +371 67225072  
e-Mail edgars@gaismasstils.lv

### Ghisamestieri Rondo / Valuation Field Roadway 1 / Observer 1 / Isolines (L)



Values in Candela/m², Scale 1 : 186

Grid: 11 x 12 Points

Observer Position: (-60.000 m, 1.500 m, 1.500 m)

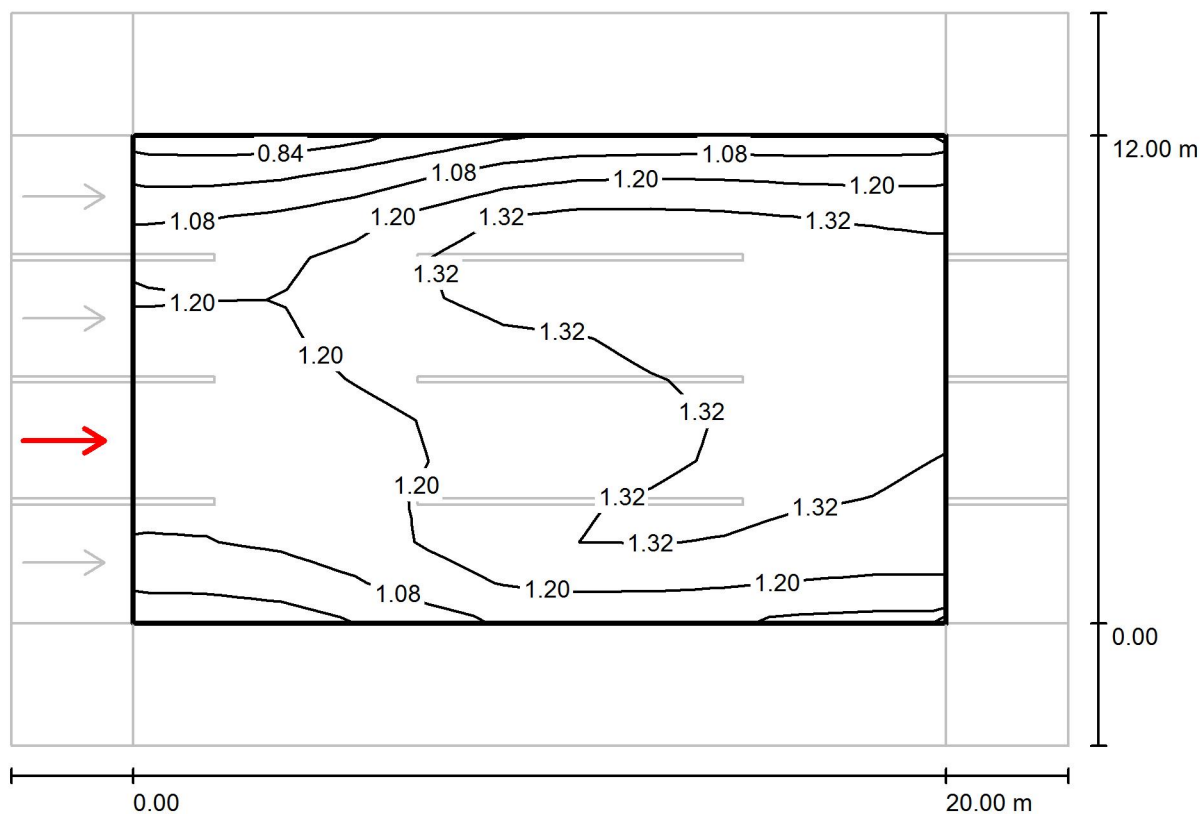
tarmac: R3, q0: 0.070

	$L_{av}$ [cd/m²]	U0	UI	TI [%]
Calculated values:	1.22	0.63	0.81	5
Required values according to class ME3b:	≥ 1.00	≥ 0.40	≥ 0.60	≤ 15
Fulfilled/Not fulfilled:	✓	✓	✓	✓

SIA Gaismas Stils  
www.gaismasstils.lv  
Maskavas iela 12, Rīga  
LV-1050, Latvija

Operator Edgars Svētiņš  
Telephone +371 67276760  
Fax +371 67225072  
e-Mail edgars@gaismasstils.lv

### Ghisamestieri Rondo / Valuation Field Roadway 1 / Observer 2 / Isolines (L)



Values in Candela/m², Scale 1 : 186

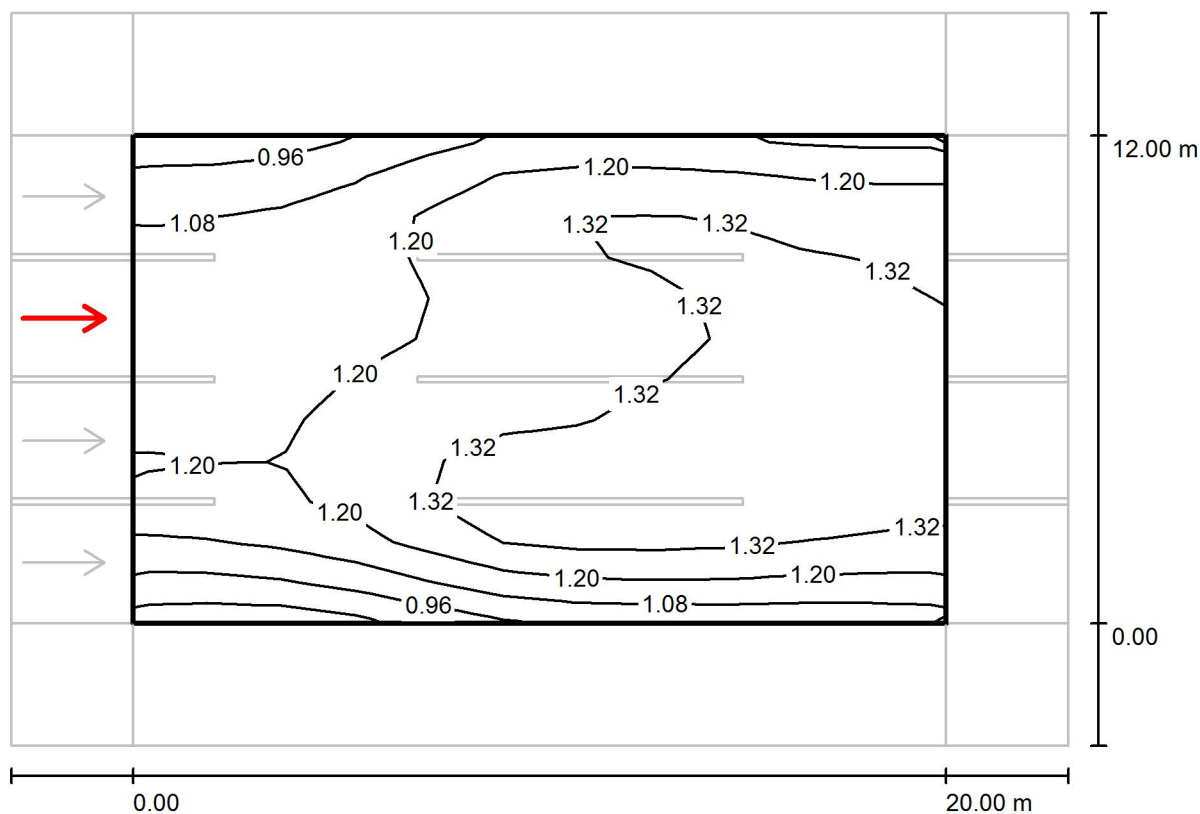
Grid: 11 x 12 Points  
Observer Position: (-60.000 m, 4.500 m, 1.500 m)  
tarmac: R3, q0: 0.070

	$L_{av}$ [cd/m²]	U0	UI	TI [%]
Calculated values:	1.22	0.68	0.82	7
Required values according to class ME3b:	$\geq 1.00$	$\geq 0.40$	$\geq 0.60$	$\leq 15$
Fulfilled/Not fulfilled:	✓	✓	✓	✓

SIA Gaismas Stils  
www.gaismasstils.lv  
Maskavas iela 12, Rīga  
LV-1050, Latvija

Operator Edgars Svētiņš  
Telephone +371 67276760  
Fax +371 67225072  
e-Mail edgars@gaismasstils.lv

## Ghisamestieri Rondo / Valuation Field Roadway 1 / Observer 3 / Isolines (L)



Values in Candela/m², Scale 1 : 186

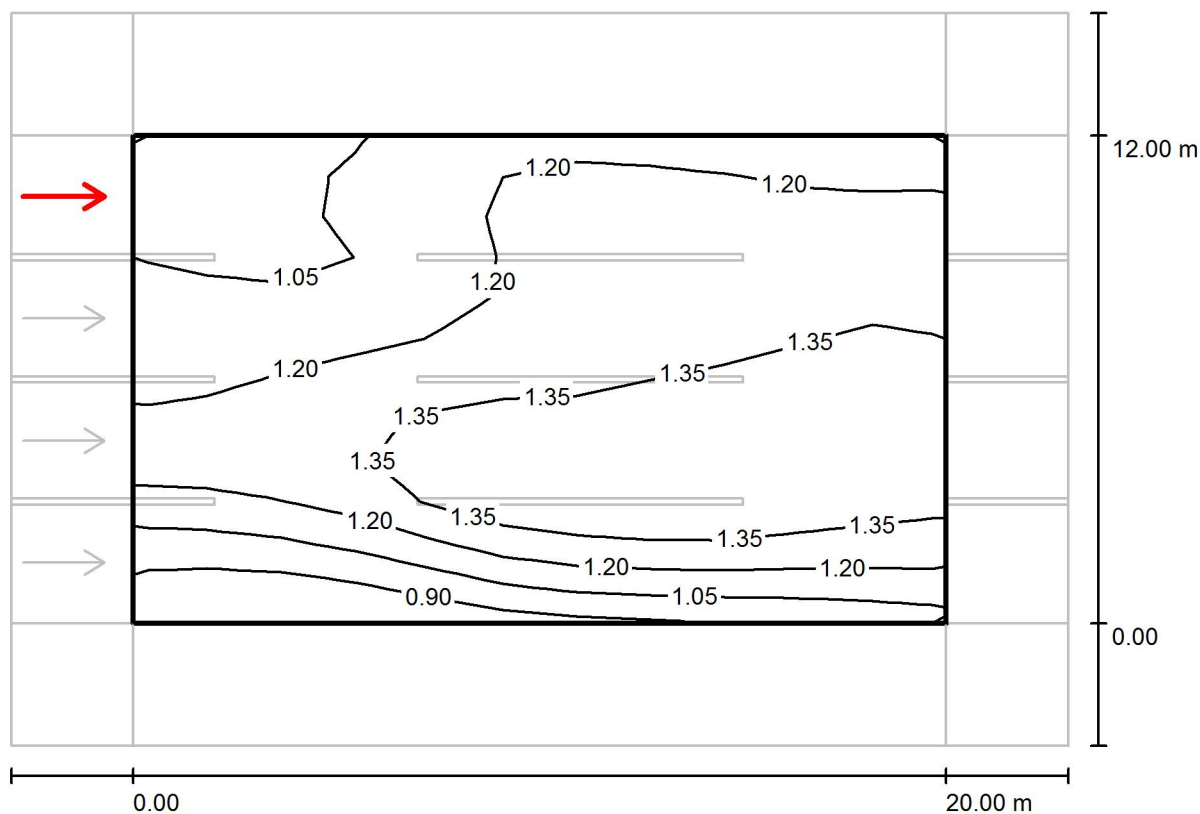
Grid: 11 x 12 Points  
Observer Position: (-60.000 m, 7.500 m, 1.500 m)  
tarmac: R3, q0: 0.070

	$L_{av}$ [cd/m²]	U0	UI	TI [%]
Calculated values:	1.22	0.68	0.82	7
Required values according to class ME3b:	$\geq 1.00$	$\geq 0.40$	$\geq 0.60$	$\leq 15$
Fulfilled/Not fulfilled:	✓	✓	✓	✓

SIA Gaismas Stils  
www.gaismasstils.lv  
Maskavas iela 12, Rīga  
LV-1050, Latvija

Operator Edgars Svētiņš  
Telephone +371 67276760  
Fax +371 67225072  
e-Mail edgars@gaismasstils.lv

### Ghisamestieri Rondo / Valuation Field Roadway 1 / Observer 4 / Isolines (L)



Values in Candela/m², Scale 1 : 186

Grid: 11 x 12 Points

Observer Position: (-60.000 m, 10.500 m, 1.500 m)

tarmac: R3, q0: 0.070

	$L_{av}$ [cd/m²]	U0	UI	TI [%]
Calculated values:	1.22	0.63	0.81	5
Required values according to class ME3b:	$\geq 1.00$	$\geq 0.40$	$\geq 0.60$	$\leq 15$
Fulfilled/Not fulfilled:	✓	✓	✓	✓